

# POST-FRAME



Pre-Engineered  
Post-Frame  
Buildings



# Post-Frame Advantage

## **Cost Effective Design**

EPS offers a wide range of product designs. From 4' on-center to 12' on-center and from 20 lb. to 100 lb. snow loads, we have you covered.

## **Local Builders**

Our independent dealer network has over 350 professional builders to provide complete service and attention to detail.

## **State-of the art Engineering**

Our post-frame buildings are engineered to IBC code for your location providing dependable, guaranteed performance.



# Flexible and Versatile



## Post-Frame Buildings

- Clear spans to 100 feet
- Eave heights to 22 feet
- 6' to 12' on center bay spacing
- Columns embedded or on concrete
- Purlins over the top or in hangers
- Girts flat or "book shelf"
- Multiple options to meet your needs

## Rafter Barns

- Eliminates horizontal members in roof
- Flexible and low cost design
- Variety of ridge venting and curtain options available
- Eavelight solar panel gables
- Open air design maximizes air flow

## Ladder Frame Buildings

- Cost-effective
- Quick to construct
- Accommodates vertical or horizontal siding

## AN EPS POST-FRAME BUILDING IS:

- Completely pre-engineered
- Provides wider clear spans
- Engineered to IBC Code
- Built by local builders

# From Start . . .



EPS Buildings are constructed by Authorized Independent Dealers.



Exterior track cover protects the door system.

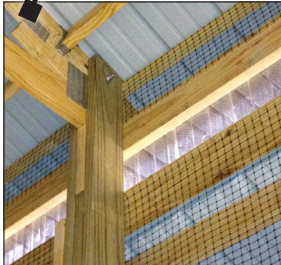


3- or 4-ply laminated column on concrete or in ground and have a 50-year warranty.

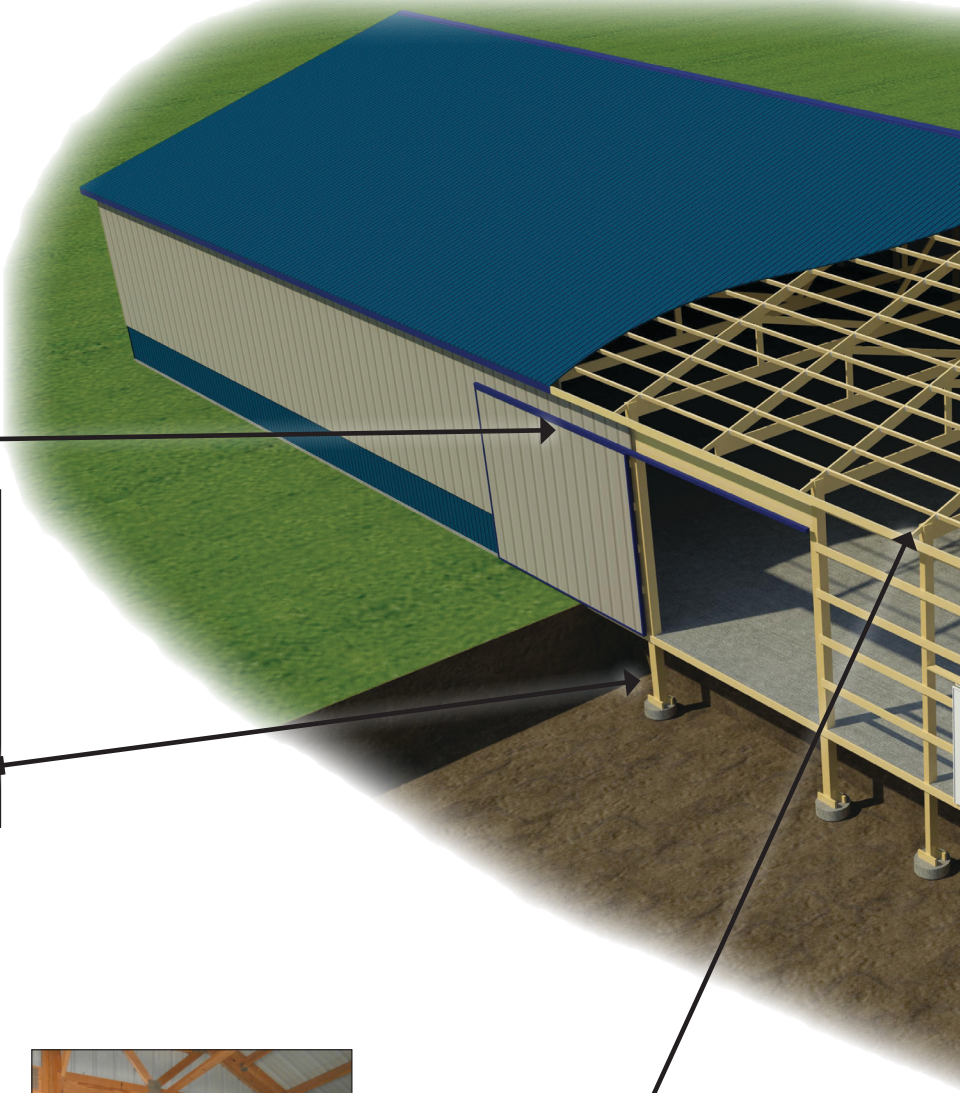
Optional EPS Dutch door in multiple color combinations.



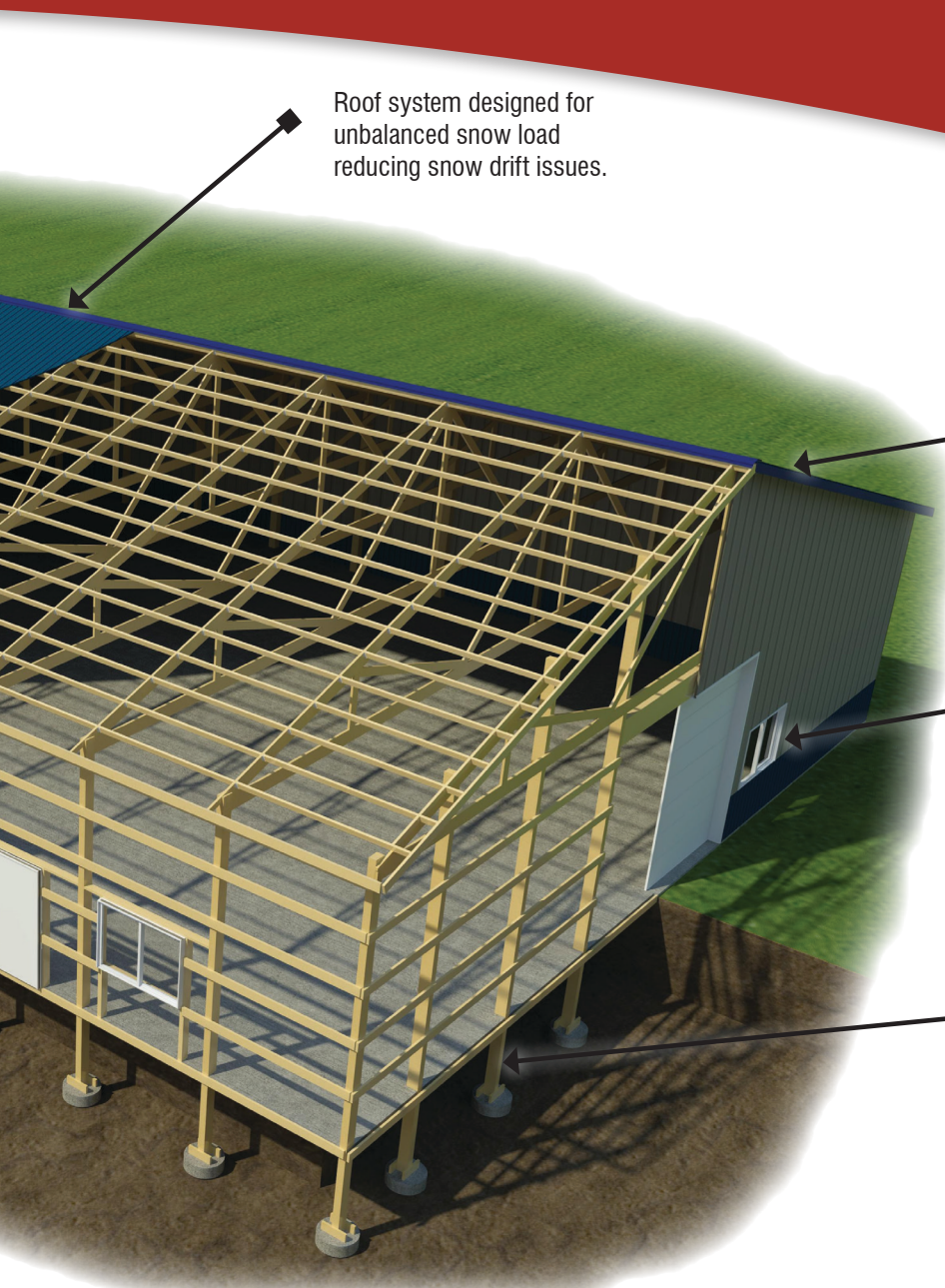
Steel Rails in Doors for superior performance in large openings. Sliding doors have a 5-year warranty for an IBC wind load.



EPS truss to column connections are center mounted and bolted for superior strength.



# ... To Finish



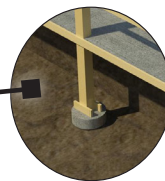
Roof system designed for unbalanced snow load reducing snow drift issues.



Variety of overhangs for looks and ventilation. Optional ridge ventilation.



Andersen or Silverline windows with EZ Fit Trim available.



Nail-laminated column. Poured footings with uplift blocks for better foundation.



**Wall Girts:**  
Standard: Flat mount.  
Optional bookshelf girts.



Roof purlins can be installed between roof members in hangers or on edge across top of framing roof members. Shown in hangers.



EPS continuous end wall columns to truss top chord connection provides a stronger gable end wall. Also engineered cross bracing and truss "T" bracing, results in extra protection for long term strength and durability.



Lean to designs come with truss or rafter designs for a multitude of uses

# EPS 29 ga. Steel Layer System

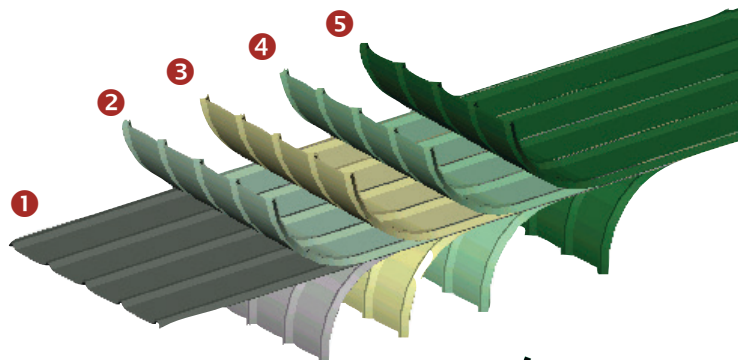
EPS roll forms our own steel. We utilize computer controlled instruments to achieve exact matches of measurements, color and uniformity. EPS paint coating carries a 40-year warranty for chipping, cracking or peeling..

- ❶ ASTM A446, Grade "E" full-hard, G100 Galvanized or AZ50 Galvalum Protection available in all colors. G100 from Iowa plant; ZX50 from Missouri plant.
- ❷ Zinc coating guards against corrosion.
- ❸ Pretreated film provides superior adhesion of the primer.
- ❹ Urethane primer provides additional corrosion protection as well as ensuring permanent bonding of the finish coat.
- ❺ Siliconized polyester finish coat adds fade-resistant color and long-lasting protection.

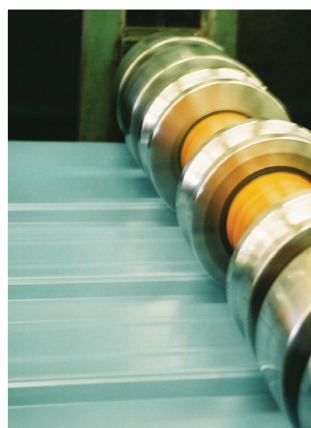
High rib steel is an option for buildings that have lower pitched roof systems. The ribs are 1-1/4" tall. The ribs are 11.33" OC and the steel has 34" wide coverage. Includes #10 x 1-1/2" screw with 5/8" wide oversized washer.

The paint systems utilized by Energy Panel Structures, Inc. are based on unique polyester and silicon polyester resins that are not sensitive to moisture but are extremely flexible. All paint systems employed are designed for longer lasting color and the reduction of white rust corrosion. The paint systems are used in architectural, commercial, and agricultural building panels.

All of the colors have been rigorously tested for performance using the highest standards as set by the National Coil Coaters Association as well as ASTM standards. The tests illustrate that the paint systems utilized are superior to the control standards for film integrity, chalk and fade. We offer a complete coating system, with primers and backers designed to provide optimum field performance in terms of adhesion, fabrication capability, resistance to abrasion and long-term corrosion resistance under normal conditions.



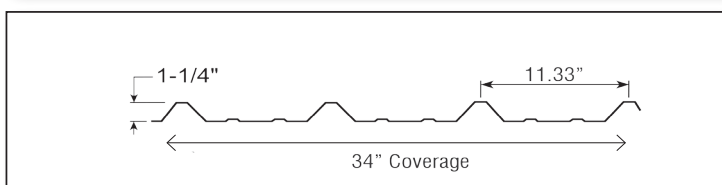
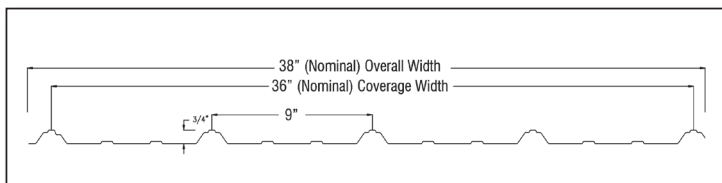
EPS uses all color-matched screw fasteners on our walls and roofs that carry the same warranty as the paint on the steel.



Wall and roof steel roll former up to 48' length



Two 3-line trim roll form machines with mandrel 10,000 lb. uncoiler, coil car and cut to length slitter. EPS also uses three different break presses and standard trim are all hemmed for added strength and aesthetics.



\*See actual warranty for details and conditions. G100 from Iowa Plant; ZX50 from Missouri Plant.

# Complete Accessories



Wainscot

Porches

Mansards

Cupolas & EPS  
Weathervanes  
with numerous top ornaments



Dutch Doors



Doors  
Custom colored doors with  
window grids & hardware.  
[www.plyco.com](http://www.plyco.com)

**PLYCO**  
CORPORATION

## EPS Sliding Doors

- Color-matched steel horizontal rails available
- Extruded aluminum vertical & bottom rails
- Delco wheel trolley system
- Lifetime warranty on track and hardware
- 5-year door warranty for IBC wind load
- Sabre latch available



## Locksets

Wide range  
of locksets  
available



**DRIPSTOP**  
Condensation control

FIGHT CONDENSATION WITHOUT INSULATION

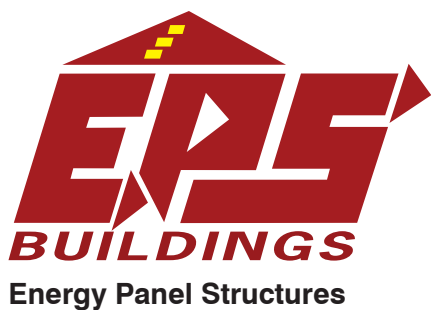
- Ideal for use in:
- Cold storage
  - Livestock confinement
  - Postframe
  - Self-storage
  - Many others





■ DURABILITY ■ ENGINEERED VALUE

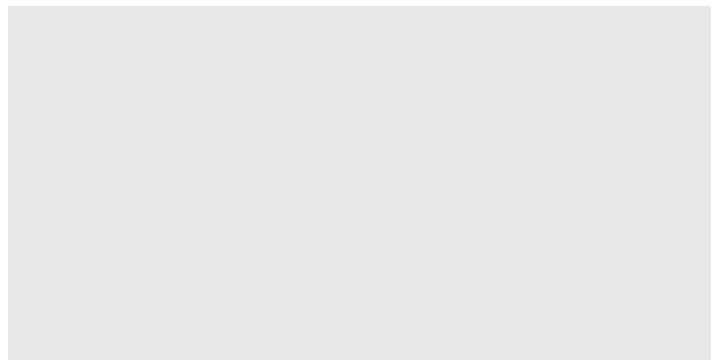
**O**ur post frame construction uses nail-laminated columns that are placed in direct contact with the ground or on top of concrete. These laminated columns are pressure treated with preservatives approved by the Environmental Protection Agency to increase their longevity. EPS columns carry a 50-year warranty\* and are custom engineered and manufactured for your project.



603 N. Van Gordon Ave.,  
Graettinger, IA 51342  
Call: 712-859-3219

232 Semo Lane  
Perryville, MO 63775  
Call: 573-547-8187

INDEPENDENT AUTHORIZED BUILDER:



[epsbuildings.com](http://epsbuildings.com)

100% Employee Owned—100% Committed to Quality